

# FCDL

## FCDL Main Service

VSA with CMA CGM  
VOSTOCHNY  
VLADIVOSTOK  
HONG KONG  
CHIWAN  
XIAMEN  
NINGBO  
SHANGHAI  
VOSTOCHNY



## FCDL North

VLADIVOSTOK  
VOSTOCHNY  
DALIAN  
XINGANG  
INCHEON  
QINGDAO  
SHANGHAI  
VLADIVOSTOK

### **3 ships deployed on FCDL:**

|            |          |
|------------|----------|
| F. Diomid  | 3091 TEU |
| F. Almatea | 3091 TEU |
| CMA Mimosa | 3000 TEU |

### **3 ships deployed on FCDL-N:**

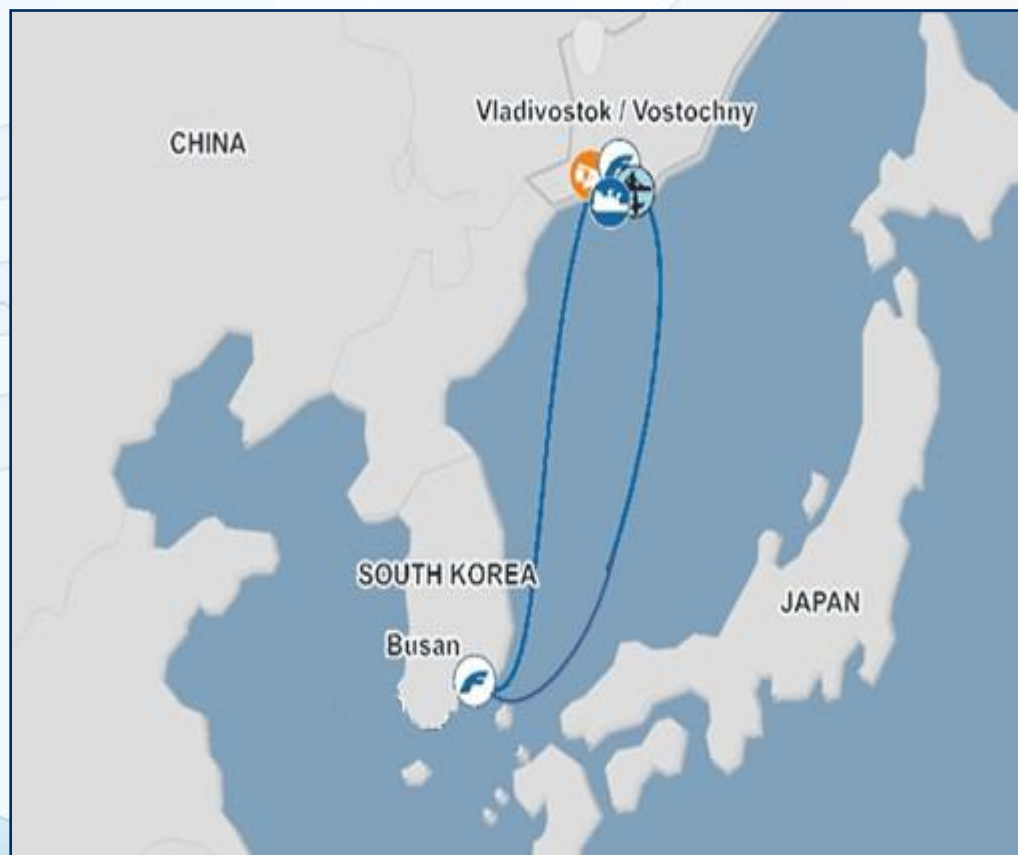
|              |          |
|--------------|----------|
| Vladivostok  | 1800 TEU |
| K. Afanasyev | 1800 TEU |
| Noble Acrux  | 1800 TEU |

**VOSTOCHNY  
BUSAN  
VLADIVOSTOK  
VOSTOCHNY**

**VSA FOML and HMM service**

FOML 1 x 2400 TEU FESCO  
KOREA – VLADIVOSTOK

HMM 1 x 2200 TEU HYUNDAI  
VOSTOCHNIY



- The only direct service from Japan to Russian Far East ports;
- On April, 2013 Tomakomai calling was resumed
- Calling ports: Vostochny — Vladivostok — Tomakomai - Yokohama — Nagoya — Kobe — Moji — Toyamashinko — Vostochny and Vladivostok with 2 sailings per month
- On this direct line 1 vessel operates with total capacity 694 TEU



**KORSAKOV**

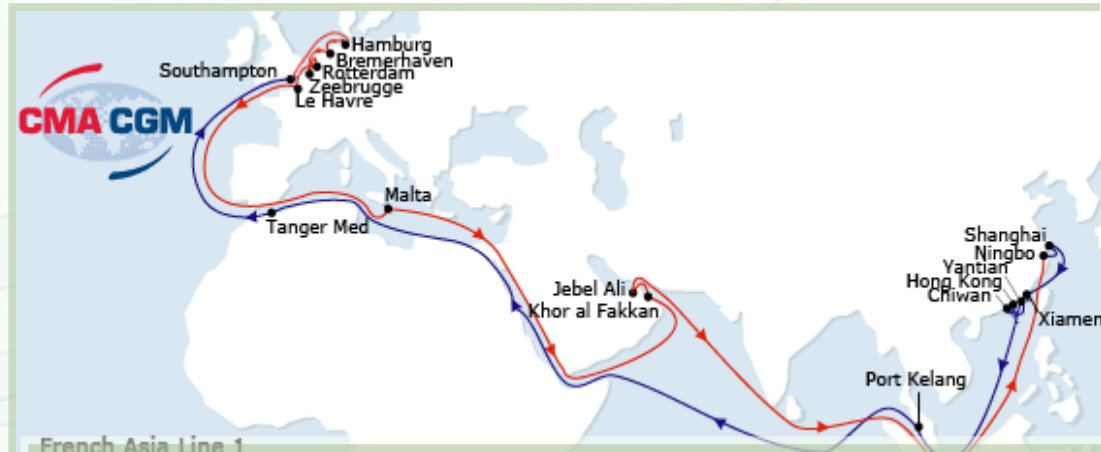
**BUSAN**

**KORSAKOV**

1 ship deployed  
AMUR 400 TEU







French Asia Line 1

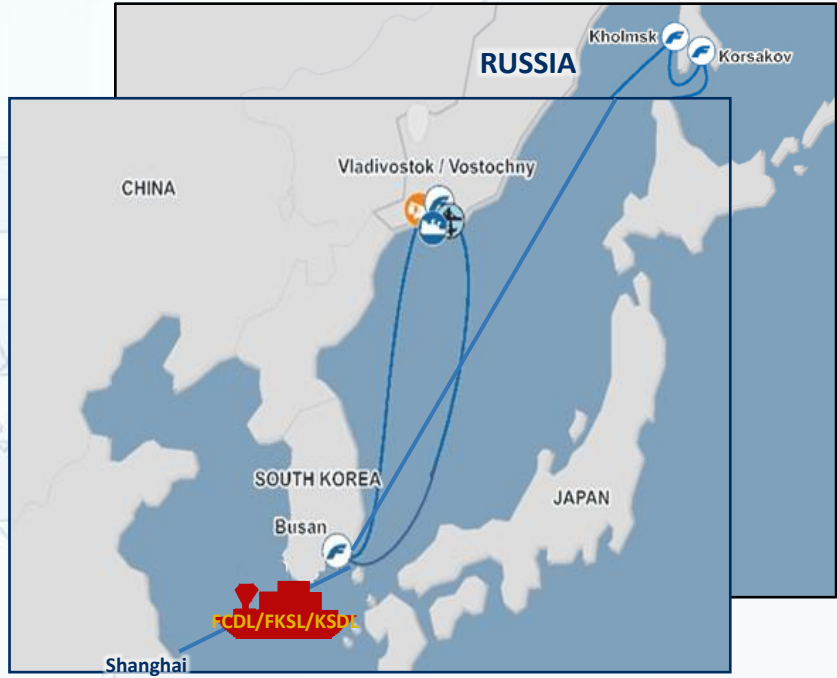
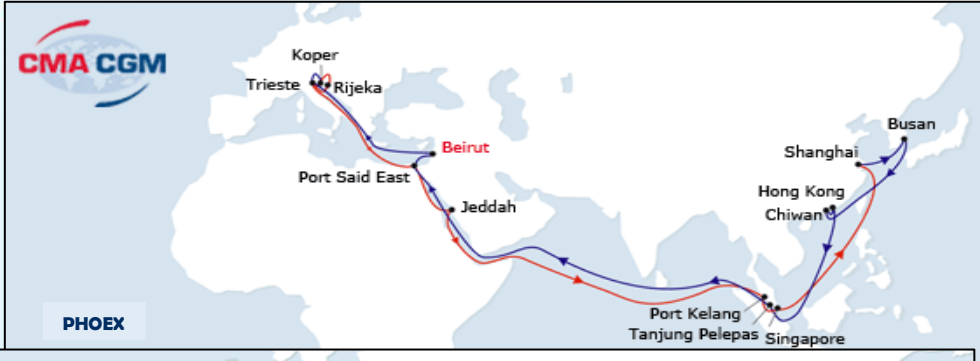


## **FAL1**

Ningbo / Shanghai / Xiamen / Hong Kong / Chiwan / Yantian / Port Kelang / Southampton / **Hamburg** / Bremerhaven / Rotterdam / **Zeebrugge** / Le Havre

## **FAL3**

Xingang / Dalian / Pusan / Qingdao / Shanghai / Yantian / Singapore / Port Kelang / Le Havre / **Hamburg** / Bremerhaven / **Rotterdam** / Southampton / **Zeebrugge**



## **PHOEX**

Trieste/Shanghai/Busan/Vladivostok/Vostochniy/Korsakov

## **MCE/MCE3**

Valencia/Barcelona/Fos/Genoa/La Spezia/Shanghai/Busan  
/Vladivostok/Vostochniy/Korsakov

Operating 4 loops  
from/to  
Dunkirk  
Zeebrugge  
Antwerp  
Hamburg  
Rotterdam  
and connecting  
UK, Italy & Spain ...  
to/from St.  
Petersburg/Ust-  
Luga.





# FESCO BLACK SEA SERVICE (Far East)

1. Through slot arrangements with **CMA CGM BEX SERVICE**, FBSS carry shipment ex China to Turkey (Istanbul - Ambarli).
2. It connects **FESCO Black Sea Shuttle (FBSS)** at Ambarli, to/from Novorossiysk & Sochi





1. Through slot arrangements with **Turkon / Seago**, FBSS carry shipment ex Europe base ports (Bremerhaven, Felixstowe, Antwerp) to Turkey (Istanbul - Ambarli).
2. It connects **FESCO Black Sea Shuttle** (FBSS) at Ambarli, to/from Novorossiysk & Sochi



1. Through slot arrangements with **TARROS / BORCHARD**, FBSS carry shipment ex Italy to Turkey
2. It connects **FESCO Black Sea Shuttle (FBSS)** at Gebze-Yilport, to/from Novorossiysk & Sochi

